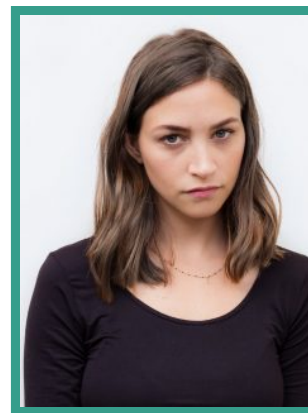


# Chelsea Edge

Actor · Female



## FEATURE FILM

| DATE | PRODUCTION (ROLE)                             | COMPANY                       | PROJECT DETAILS       |
|------|---|-------------------------------|-----------------------|
| 2019 | FAUNUTLAND AND THE LOST MAGIC (The Witch)     | Phelecan Films AB             | Dir. Marcus Ovnell    |
| 2016 | END OF TERM (Melissa)                         | End of Term Ltd / GSP Studios | Dir. Mark Murphy      |
| 2015 | TO DREAM (Lex)                                | Anomaly Cinema                | Dir. Nicole Albarelli |
| 2019 | THE FAUNUTLAND AND THE LOST MAGIC (The Witch) | Phelecan Films AB             | Dir. Marcus Ovnell    |

## TELEVISION

| DATE | PRODUCTION (ROLE)                   | COMPANY              | PROJECT DETAILS           |
|------|-------------------------------------|----------------------|---------------------------|
| 2022 | DEATH IN PARADISE (Sophie Chambers) | Red Planet Pictures  | Dir. Various              |
| 2021 | PILGRIM (Young Woman)               | Disney+              | Dir. Various              |
| 2021 | SUSPICION (Heather)                 | Apple                | Dir. Chris Long           |
| 2019 | I HATE SUZIE (Valerie)              | Bad Wolf Productions | Dir. Georgie Banks-Davies |
| 2019 | QUEENS OF MYSTERY (Nikki Holler)    | Wildemarsh Limited   | Dir. Jamie Stone          |
| 2019 | VERA (Kayleigh)                     | ITV Studios          | Dir. Lawrence Gough       |
| 2016 | THE MISSING 2 (Real Alice)          | BBC                  | Dir. Various              |

## SHORT FILM

| DATE | PRODUCTION (ROLE)         | COMPANY                   | PROJECT DETAILS        |
|------|---------------------------|---------------------------|------------------------|
| 2022 | OUT OF TIME (Lena)        | Will Liney Film           | Dir. Will Liney        |
| 2019 | IN THE MORNING (Girl)     | Mobley Street Productions | Dir. Nicole Albarelli  |
| 2018 | NIGHT OUT (Jade)          | Unit9 Films               | Dir. Amelia Hashemi    |
| 2017 | THESE BROKEN WINGS (Mona) | Gallivant Film            | Dir. James Schlesinger |
| 2014 | 5 DAYS IN AUGUST (Amelie) | Discourse Pictures        | Dir. Joao Nunes        |
| 2015 | ISABELLA (Ruth)           | Brew Films                | Dir. Emma Swinton      |
| 2014 | 5 DAYS IN AUGUST          | Discourse Pictures        | Dir. Joao Nunes        |

## COMMERCIAL

| DATE | PRODUCTION (ROLE)                                  | COMPANY    | PROJECT DETAILS     |
|------|--|------------|---------------------|
| 2014 | MENINGITIS CHARITY CAMPAIGN (Sophia - Main Artist) |            | Dir. Leo Burnett    |
| 2014 | LOVE LETTER TO MOM (Main Girl)                     | Diadermine | Dir. Laurent Chanez |

## MUSIC VIDEO

| DATE | PRODUCTION (ROLE)         | COMPANY                           | PROJECT DETAILS                            |
|------|---------------------------|-----------------------------------|--|
| 2014 | YOUNG CHASERS (Main Girl) | Circa Waves / Bullion Productions | Dir. Davis Sillis                          |
| 2014 | TRIGGER DANCE (Main Girl) |                                   | Dirs. Sophie Harris Taylor and Misha Newby |
| 2013 | BACKWATERS (Main Girl)    |                                   | Dir. Stephen Agnew                         |

## THEATRE

| DATE | PRODUCTION (ROLE)                     | COMPANY        | PROJECT DETAILS     |
|------|---------------------------------------|----------------|---------------------|
| 2013 | JULIUS CEASAR (Portia)                | Aspect Theatre | Dir. Mark Bishop    |
| 2012 | TWELFTH NIGHT (Viola)                 | Aspect Theatre | Dir. Mark Bishop    |
| 2012 | A MIDSUMMER NIGHT'S DREAM (Hippolyta) | Aspect Theatre | Dir. Erin Shanagher |

|      |                              |                |                   |
|------|------------------------------|----------------|-------------------|
| 2011 | THE CRUCIBLE (Mary Warren)   | Aspect Theatre | Dir. Julia Nelson |
| 2009 | OUR DAY OUT (Carol Chandler) |                | Dir. Mark Butcher |

## SKILLS / QUALIFICATIONS

|  |
|--|
| Location:  |
| London, United Kingdom   |
| Height: 5'5" (165cm)   |
| Weight: 7st. 7lb. (48kg)   |
| Playing Age:   |
| 16 - 25 years  |
| Appearance: Eastern European, Scandinavian, White  |
| Eye Colour: Grey-Green   |
| Hair Colour: Light/Mid Brown   |
| Hair Length: Long  |
| Accents & Dialects:  |
| American-New York, American-Standard, American-West Coast, Australian, Central Scottish, Cockney, Dublin, Edinburgh, Glasgow, Irish-Southern, Lancashire*, London, Manchester, RP, Russian<br>(* = native) |
| Sports:  |
| Air Rifle Shooting, Archery, Cycling, Running, Shooting, Swimming, Yoga  |
| Car Driving Licence  |

## EDUCATIONAL

| DATE | PRODUCTION (ROLE)        | PROJECT DETAILS      |
|------|--------------------------|----------------------|
| 2010 | IT'S NOT A GAME (Lauren) | Dir. Kenny Frankland |

## VIDEO GAME

| DATE | PRODUCTION (ROLE) | COMPANY      | PROJECT DETAILS  |
|------|-------------------|--------------|------------------|
| 2019 | ERICA (Tobi)      | Flavourworks | Dir. Jamie Stone |

