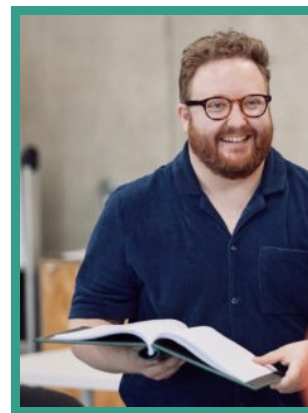


Ed Madden

Director

Represented by:

Jessica Stewart



Ed is a director and dramaturg, working primarily with new writing. He is from Bristol and is based in London, where he is currently Associate Dramaturg at the National Theatre. Most recently, Ed directed Jack Bradfield's play *The Habits* (2025) at Hampstead Theatre. His work also includes the premieres of Sophia Chetin-Leuner's play *This Might Not Be It* (2024); Marek Horn's plays *Octopolis* (2023) and *Yellowfin* (2021); and Sam Steiner's plays *A Table Tennis Play* (2019) and *Lemons Lemons Lemons* (2015-17). He has theatre projects in development with Francesca Moody and Jessie Anand. For screen, he is co-writing original feature drama *The Ending*, with Tessa Ross and Sarah Esberg producing.

THEATRE - AS DIRECTOR

DATE	PRODUCTION (ROLE)	COMPANY	PROJECT DETAILS
2025	THE HABITS	Hampstead Theatre	By Jack Bradfield
2024	COSI FAN TUTTE	Da Ponte Festival	Music by Mozart Libretto by Da Ponte
2024	THIS MIGHT NOT BE IT	Bush Theatre	By Sophia Chetin-Leuner
2023	THE LIMIT	Royal Ballet	Choreography by Kristen McNally Music by Isobel Waller-Bridge Text by Sam Steiner
2023	OCTOPOLIS	Hampstead Theatre	By Marek Horn
2021	YELLOWFIN	Jessie Anand Productions / Walrus / Southwark Playhouse	By Marek Horn Nominated for 5 Off West-End Awards, including Best Director
2019	A TABLE TENNIS PLAY	Walrus / Underbelly Cowgate	By Sam Steiner
2018	A NUMBER	The Other Room, Cardiff	By Caryl Churchill Welsh premiere
2017	THE WORLD'S WIFE	Welsh National Opera / Taliesin Arts Centre / Mavron Quartet	Music by Tom Green Libretto by Carol Ann Duffy
2015-2017	LEMONS LEMONS LEMONS LEMONS LEMONS	Walrus / UK Tour / Edinburgh Fringe	By Sam Steiner

THEATRE - AS ASSOCIATE DIRECTOR

DATE	PRODUCTION (ROLE)	COMPANY	PROJECT DETAILS
2022	LEOPOLDSTADT	Sonia Friedman Productions / Longacre Theatre, Broadway	By Tom Stoppard Dir. Patrick Marber
2021	HABEAS CORPUS	Menier Chocolate Factory	By Alan Bennett Dir. Patrick Marber
2021	LEOPOLDSTADT	Sonia Friedman Productions / Wyndham's Theatre	By Tom Stoppard Dir. Patrick Marber
2019	TARTUFFE	National Theatre	By Molière adapt. John Donnelly Dir. Blanche McIntyre
2018	THE WINTER'S TALE	Shakespeare's Globe	By William Shakespeare Dir. Blanche McIntyre
2016	THE CHILDREN	Royal Court	By Lucy Kirkwood Dir. James Macdonald
2016	THE RIVALS	Bristol Old Vic / Glasgow Citizens / Liverpool Everyman	By Richard Brinsley Sheridan Dir. Dominic Hill
2016	THE IPHIGENIA QUARTET: AGAMEMNON/CHORUS	Gate Theatre, Notting Hill	By Caroline Bird / Chris Thorpe Dir. Christopher Haydon / Elayce Ismail