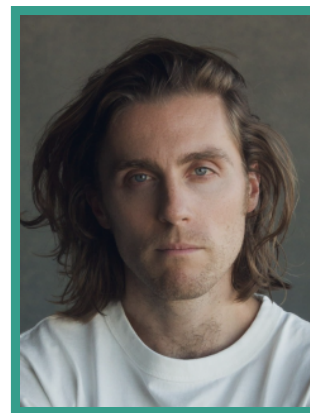


Jack Farthing

Actor · Male

Jack will soon be seen as lead regular in the BBC's upcoming adaptation of Agatha Christie's TOWARDS ZERO as well as feature SAVAGE HOUSE, directed by Peter Glanz.



FEATURE FILM

PRODUCTION (ROLE)	COMPANY	PROJECT DETAILS
NEXT LIFE (Noah)	42	Dir. Drake Doremus
SAVAGE HOUSE (Halifax)	Record Player Films	Dir. Peter Glanz
ISLANDS (Dave)	Leonine Studios	Dir. Jan-Ole Gerster
SPENCER (Prince Charles)	Shoebox Films	Dir. Pablo Larraín
THE LOST DAUGHTER (Joe)	Endeavor Content	Dir. Maggie Gyllenhaal
LOVE. WEDDING. REPEAT (Marc)	Notorious Pictures, Tempo Productions Limited	Dir. Dean Craig
OFFICIAL SECRETS (Andy Dumfries)	Raindog Films, Mark Gordon Company, eOne	Dir. Gavin Hood
BURN BURN BURN (Dan - Lead)		Dir. Chanya Button
THE RIOT CLUB (George Balfour - Supporting Lead)	Blueprint Pictures	Dir. Lone Scherfig

TELEVISION

PRODUCTION (ROLE)	COMPANY	PROJECT DETAILS
TOWARDS ZERO (Thomas)	BritBox	Dir. Sam Yates
RAIN DOGS (Selby)	HBO/BBC	Dir. Richard Laxton & Jennifer Perrott
THE SERIAL KILLER'S WIFE (Tom)	Paramount+	Dir. Laura Way



INDEPENDENT TALENT GROUP LTD

40 WHITFIELD STREET LONDON W1T 2RH

TEL: +44 (0)20 7636 6565 FAX: +44 (0)20 7323 0101

REGISTERED IN ENGLAND NUMBER 4338525 EMPLOYMENT AGENCY,
REGISTERED OFFICE 40 WHITFIELD STREET LONDON W1T 2RH

CHLOE (Richard)	BBC / Amazon	Dir. Alice Seabright
THE ABC MURDERS (Donald)	Mammoth Screen	Dir. Alex Gabassi
POLDARK series 1 - 5 (George Warleggan - Lead Regular)	Mammoth Screen / BBC	Dirs. Ed Bazalgette, Will McGregor & Various
CILLA (John Lennon - Supporting Lead Regular)	ITV	Dir. Paul Whittington
BLANDINGS (Freddie Threepwood - Lead Regular 2013-2014)	Mammoth Screen / BBC (Series I & II)	Dirs. Mandie Fletcher & Geoffrey Sax
POIROT: THE BIG FOUR (Gerald Paynter)	Mammoth Screen / ITV	Dir. Peter Lydon
DA VINCI'S DEMONS (Bottlicelli)	Starz / BBC Worldwide	Dirs. David Goyerand & Jamie Payne
SHAKESPEARE UNCOVERED: HAMLET (Hamlet)	Blakeway Productions / BBC	Dir. Simon Usher
SILK (Patrick Telford)	BBC	Dir. Alice Troughton
DANCING ON THE EDGE (Carl)	Ruby Film and Television / BBC	Dir. Stephen Poliakoff
PRAM FACE (Mitchell)	Little Comet / BBC	Dir. Dan Zeff

THEATRE

PRODUCTION (ROLE)	COMPANY	PROJECT DETAILS
WILD (Andrew)	Hampstead Theatre	Dir. James Macdonald
CARMEN DISTRUPTION (Carmen - Lead)	Almeida	Dir. Michael Longhurst
BANG BANG BANG (Vin - Lead)	Royal Court / Out Of Joint	Dir. Max Stafford-Clark
MARY BROOME (Leonard - Lead)	Orange Tree Theatre	Dir. Auriol Smith
CHARLEY’S AUNT (Jack)	Royal Exchange	Dir. Braham Murray
COMEDY OF ERRORS (Antipholus Of Ephesus)	Royal Exchange	Dir. Roxana Silbert
LOVE’S LABOURS LOST (Dumaine)	Shakespeare Globe / U.S. Tour	Dir. Dominic Dromgoole
HELEN (Chorus)	Shakespeare Globe	Dir. Deborah Bruce
ROMEO AND JULIET (Benvolio)	Shakespeare Globe	Dir. Dominic Dromgoole
THE ODYSSEY (Soldier)	National Theatre	Dir. Tom Cairns

SKILLS / QUALIFICATIONS

Based:

In London

Accents & Dialects

American-Southern States, American-Standard, Cockney, Dublin, French, London, RP*, Scottish-Standard, Welsh-Standard
*=Native

Languages

English*, French, Spanish
*=Native/Fluent

Music & Dance

Ballroom Dancing, Drums, Flamenco, Guitar, Keyboards, Period Dancing, Tap, Tenor

Sports

Football, Judo, Rugby, Stage Combat
