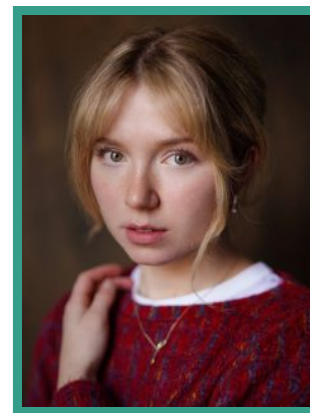


Alyth Ross



FEATURE FILM

PRODUCTION (ROLE)	COMPANY	PROJECT DETAILS
DIRTY ANGELS (Halle)	Millennium Media	Dir. Martin Campbell

TELEVISION

PRODUCTION (ROLE)	COMPANY	PROJECT DETAILS
DALGLIESH (Brenda Pridmore)	New Pictures	Dir. Geoffrey Sax
LAST LIGHT (Laura Yeats)	Peacock / MGM International	Dir. Dennie Gordon
TRACES (Holly)	Alibi	Dir. Claire Winyard

THEATRE

PRODUCTION (ROLE)	COMPANY	PROJECT DETAILS
POD (Ginger)	Guildhall School of Music and Drama	Dir. Jamie Bradley and Vicki Igbokwe
KNIVES IN HENS (Young Woman)	Guildhall School of Music and Drama	Dir. Amy Hodge
LITTLE SHOP OF HORRORS (Audrey)	Guildhall School of Music and Drama	Dir. Martin Connor
WHO'S AFRAID OF VIRGINIA WOOLF (Martha)	Guildhall School of Music and Drama	Dir. Wyn Jones & Annemette Verspeak
FRENCH WITHOUT TEARS (Jacqueline)	Guildhall School of Music and Drama	Dir. Wyn Jones & Annemette Verspeak

THE PROVOKED WIFE (Lady Brute)	Guildhall School of Music and Drama	Dir. Richard Katz & Noa Wagner
THE CHERRY ORCHARD (Anya)	Guildhall School of Music and Drama	Dir. Sue Lefton
FALSE FLAG (Sandra)	Guildhall School of Music and Drama	Dir. Nathaniel Martello-White